

# FCS-4F datasheet

## 1. Description:

- It is used for different kinds of modules and applied to the working area subsystem.
- It uses embedded surface frame, easy to install and disassemble, it is with protective door and dusty free, can do OEM for any customers and print requested LOGO.
- With application of fiber SC/LC simplex, duplex and other different environment installed plate or flush plate. All modules can be configured on customer's choice.
- Cable management can be connected without cutting(with express port)
- All modules are free of welding.

## 2、 Working area:

- The telecommunication network, metropolitan area network, optical fiber communication system.
- Optical testing equipment/instrument.
- CATV optical fiber, optical fiber sensor.
- Optical fiber broadband access network, FTTH optical fiber.
- Optical fiber distribution frame, frame type and wall type optical fiber distribution unit.

## 3、 Performance index:

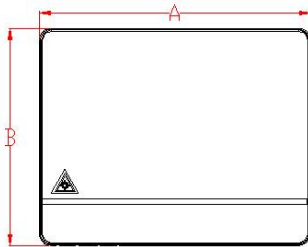
Item	Technical data
Application	3.0 x 2.0 mm drop cable or indoor cable
Fiber diameter	125 $\mu$ m ( 652 & 657 )
Tight cladding diameter	250 $\mu$ m & 900 $\mu$ m
Mode of application	Single mode & duplex mode
Tensile strength	>50 N
End-use temperature	-40~+85 $^{\circ}$ C
Adaptor	SC & LC
Insertion loss	$\leq$ 0.2dB ( 1310nm & 1550nm )
output	4

## 4、 Configuration table:

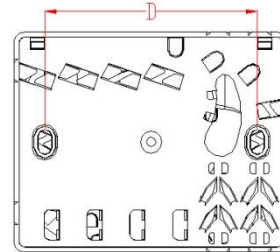
Table 1 Model and configuration

## FCS-4F datasheet

Model	Size (Pic 1)	Max Capacity			Installation Size(Pic 2)
	A*B*C (mm)	SC	LC	PLC	D (mm)
FCS-4F	100.6*80.6*28.8	4	8	8	78

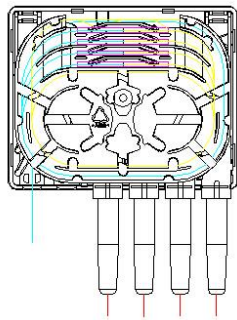
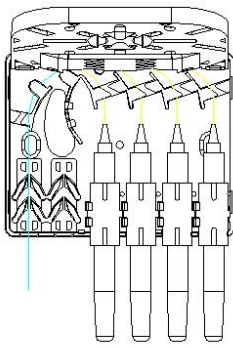


Pic 1 Box Size

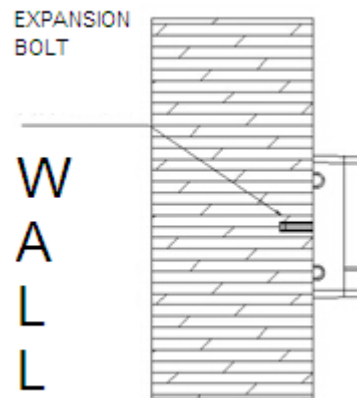


Pic 2 Installation Size

### 5. Product inside structure and cable ways:



Pic 3 Cable ways



Pic 4 Wall-mounted installation

### 6. Installation:

#### 1. Wall-mounted installation

Drill 2 holes over the wall based on the size in table 1, place the expansion

## **FCS-4F datasheet**

bolt  $\Phi 5.5 \times 30$ , place the box to match up the holes and use bolt to fasten. (see Pic 4)

### **7、Accessories:**

1. User Manual\*1。
2. Accessories Bag \* 1